

# ETHNOGRAPHY?

PARTICIPANT OBSERVATION, A POTENTIALLY REVOLUTIONARY PRAXIS

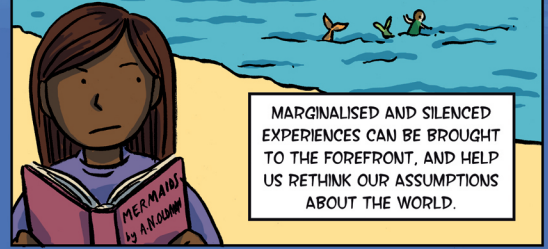
AN ANTHROPOLOGIST'S TALE



WHAT WE KNOW ABOUT HUMANS AND THEIR COMMUNITIES IS SHAPED BY YEARS OF KNOWLEDGE CREATED BY THOSE WHO HAVE THE AUTHORITY AND POWER TO INFLUENCE HOW WE THINK.

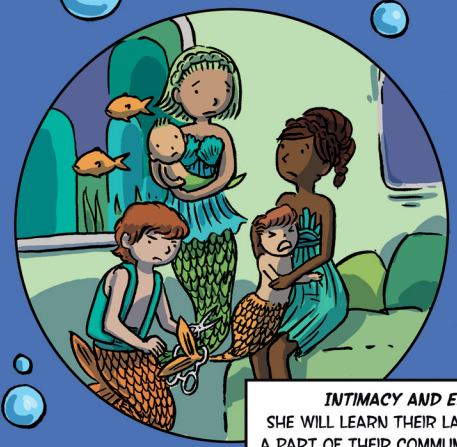


AN ANTHROPOLOGIST CAN CHALLENGE THESE RECEIVED WISDOMS BY LIVING WITH THE PEOPLE TO BE STUDIED, PARTICIPATING IN AND OBSERVING THEIR DAILY LIVES, CONDUCTING LONG-TERM ETHNOGRAPHIC RESEARCH.



MARGINALISED AND SILENCED EXPERIENCES CAN BE BROUGHT TO THE FOREFRONT, AND HELP US RETHINK OUR ASSUMPTIONS ABOUT THE WORLD.

IT CAN BE DIFFICULT FOR THE ANTHROPOLOGIST TO LEAVE THE SHORE OF HER HOME BEHIND AND DIVE DEEP TO IMMERSE HERSELF IN THE COMMUNITIES SHE IS RESEARCHING. BUT SHE MUST.



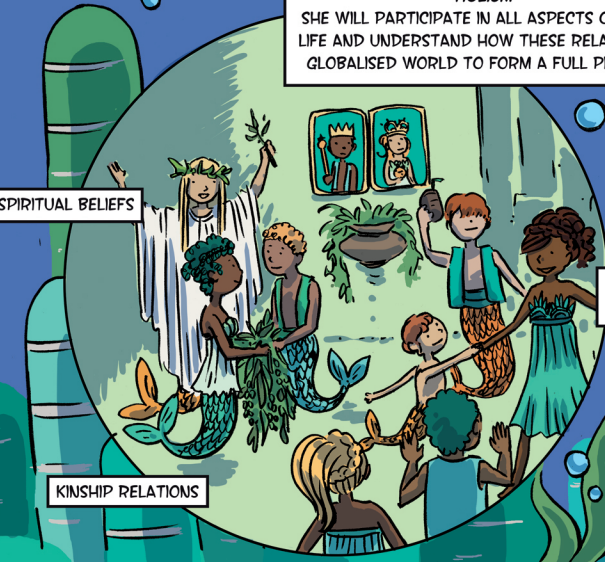
**INTIMACY AND ESTRANGEMENT**  
SHE WILL LEARN THEIR LANGUAGE, AND BECOME A PART OF THEIR COMMUNITY. THESE BONDS WILL HELP HER MORE DEEPLY UNDERSTAND THEM AND THEIR SITUATION.



**REVEALING SOCIAL RELATIONS**  
WHAT ARE THE RELATIONSHIPS WITHIN THE COMMUNITY, AND TO THE WIDER WORLD?

**LONG DURATION**  
TO MOVE BEYOND A SUPERFICIAL UNDERSTANDING, SHE MUST LIVE WITH THE PEOPLE FOR A LONG PERIOD, USUALLY 18 MONTHS OR MORE.

**HOLISM**  
SHE WILL PARTICIPATE IN ALL ASPECTS OF DAILY LIFE AND UNDERSTAND HOW THESE RELATE TO A GLOBALISED WORLD TO FORM A FULL PICTURE.



SPIRITUAL BELIEFS

POLITICAL AND ECONOMIC STRUCTURE

KINSHIP RELATIONS

BUT ONE DAY SHE WILL HAVE TO SWIM BACK TO HER OWN SHORE, EVEN IF IT HAS BECOME DIFFERENT TO THE ONE SHE LEFT BEHIND.



EVENTUALLY, THESE EXPERIENCES ENABLE THE RESEARCHER TO CREATE NEW KNOWLEDGE ABOUT THE WORLD AND SHARE IT WITH OTHERS.



HER RESEARCH IS A POLITICAL ACT - A **POTENTIALLY REVOLUTIONARY PRAXIS** - THAT CAN CHALLENGE RECEIVED AUTHORITY AND STANDARD VIEWPOINTS. SHE CAN USE IT TO ENGAGE OTHERS, INFLUENCE THEIR IDEAS AND PERHAPS BETTER ACT IN THE WORLD.

